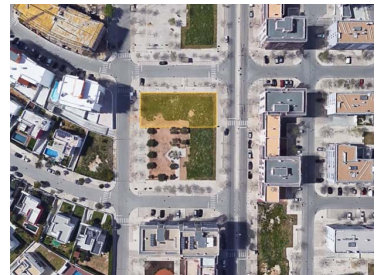




Loulé - Land



 **2470**

Area (m²)

 **780**

Land Area (m²)

1 800 000 €

(EUR €)

Urban Land for 23 dwellings with 780m2 commerce in the Center of Loulé

Sale of urban land for the construction of an apartment block in the center of Loulé, in Quinta de Betunes.

This plot includes the construction of 23 apartments with 1 store, in the area of Quinta de Betunes, an urban expansion area with services and commerce around.

The implantation area of the building is 542m2 and includes a possible construction area of 2,470m2.

On site, it already has the necessary infrastructures of electricity, mains water, sewage and fiber.



Cláudia Oliveira

+351916327870 ²

claudia.oliveira@bravaproperties.com

T +351 289 049 671 ¹ · E info@bravaproperties.com
Av. Tivoli , Edif. Via Marina, Loja 14 8125-410 Quarteira
AMI 21073

¹ (Call to national fixed network) | ² (Call to national mobile network)



It is located a few steps from schools and a large supermarket, 10 minutes from Mar Shopping and with good accessibility to the N125 and Via do Infante.

Property Features

- Proximity: Airport, Mountain, Shopping, Restaurants, City, Open field, Hospital, Pharmacy, Public Transport, Schools, Public Swimming Pools, Playground
- Accessibility\proximity: Bus, Bus station, Commercial areas, Restaurants
- Access to people with mobility difficulties
- Parking places
- Energetic certification: Exempt



Cláudia Oliveira

+351916327870 ²

claudia.oliveira@bravaproperties.com

T +351 289 049 671 ¹ · E info@bravaproperties.com
Av. Tivoli , Edif. Via Marina, Loja 14 8125-410 Quarteira
AMI 21073

¹ (Call to national fixed network) | ² (Call to national mobile network)