



**Your Logo Here**  
Friendly Real Estate

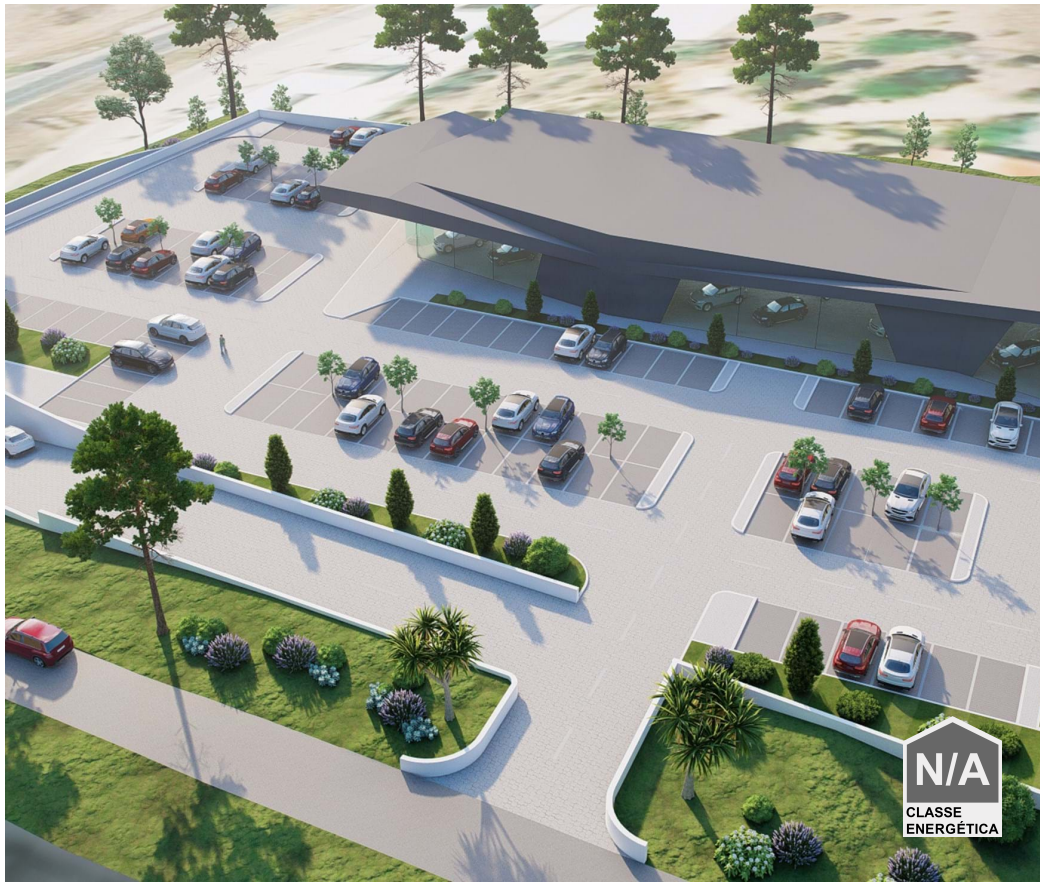
BRV-811

Reference

Scan the QR code to view the property



## Almancil - Land



 **3400**

Area (m²)

 **7250**

Land Area (m²)

**3 200 000 €**

(EUR €)

## Land for construction of warehouse or Padel courts

Land very well located in an area with excellent access on the Almancil, Loulé and Faro axis. A building (warehouse/commercial) with an area of 1450m<sup>2</sup> + 1954m<sup>2</sup> of basement has been submitted to C. M. de Loulé for licensing approval. There is also the possibility of building a padel court complex (with buildings of up to 450m<sup>2</sup> to support it).

## Property Features

• Proximity: City, Open field, Pharmacy, Public Transport, Schools

• Energetic certification: Exempt



**Sandra Baião**

+351912431061 <sup>2</sup>

sandra.baiao@bravaproperties.com

**T +351 289 049 671 <sup>1</sup> · E info@bravaproperties.com**  
**Av. Tivoli , Edf. Via Marina, Loja 14 8125-410 Quarteira**  
**AMI 21073**

<sup>1</sup> (Call to national fixed network) | <sup>2</sup> (Call to national mobile network)